

DELTA MOSQUITO & VECTOR
CONTROL DISTRICT

Dr. Mustapha Debboun
General Manager

Post Office Box 310 * Visalia, California 93279-0310

Mir Bear-Johnson
Assistant Manager

Hector Cardenas
Operations Program Manager

1737 West Houston Avenue * Visalia, California 93291

Phone (559) 732-8606 * (877) 732-8606 * Fax (559)-732-7441

Crystal Grippin
Scientific Program Manager

www.deltavcd.com

Sheri D. Davis
Administrative Assistant



Andrea Troupin
Biologist

Javier Valdivias
Biologist

Mark Nakata
Biologist

DATE: Friday September 3, 2021

TO: Board of Trustees, Delta Mosquito and Vector Control District

FROM: Dr. Mustapha Debboun, General Manager

SUBJECT: Regular Meeting of the District's Board of Trustees

TIME: Wednesday, September 8, 2021 at 4:30 p.m.

PLACE: District Boardroom, 1737 West Houston Avenue, Visalia
Teleconference Dial in Number: 1-978-990-5000 access code 575024

AGENDA:

1. Roll Call

2. Employee Introduction

The General Manager will introduce Mr. Bryan Ruiz, Vector Control Tech III to the Board of Trustees.

3. Oxitec Presentation

A team from Oxitec Ltd. will give a brief presentation "Oxitec's Friendly™ *Aedes aegypti* suppression technology and the potential for collaboration".

ACTION

4. Consent Calendar

- a. August Minutes
- b. August Bills (Board Order #6)
- c. September Payroll (Board Order #7)
- d. September Bills (Board Order #8)

5. Public Forum

Members of the public may address the Board.

6. Staff Report

The General Manager will report on items of operational interest.

7. Surveillance Report

The Assistant Manager will report on surveillance information for the state, region, and local community.

ACTION

8. Enterprise Fleet Management (EFM)

The General Manager will request approval to lease four Chevrolet Colorado pickups from EFM for delivery in March 2022.

ACTION

9. Vehicle Replacement

The General Manager will request approval to purchase a vehicle to replace truck T2. Insurance will reimburse the total amount less \$1,000.00 deductible.

ACTION

10. Non-Elective Component

The Board will set the premium component required for medical health coverage in the Section 125 plan maintained by the District.

11. Reappointments

The General Manager will poll Trustees up for reappointment as to whether they want a letter sent on their behalf to the appointing authority.

12. Closed Session Case Review/Planning

Section 54956.9 of Division 3.6 of Title 1 of the Government Code.

ACTION

13. Adjournment

Adjourn meeting of the Board of Trustees to reconvene on Wednesday, October 13, 2021 at 4:30 p.m. in the Delta Mosquito and Vector Control District Boardroom, 1737 W. Houston Ave., Visalia, CA.

Note: Items designated for information are appropriate for Board action if the Board wishes to take action.

1. Roll Call

2. Employee Introduction

The General Manager will introduce Mr. Bryan Ruiz, Vector Control Tech III to the Board of Trustees.

3. Oxitec Presentation

A team from Oxitec Ltd. will give a brief presentation “Oxitec’s Friendly™ *Aedes aegypti* suppression technology and the potential for collaboration”.



Oxitec's Friendly™ *Aedes aegypti*
Delivering a Groundbreaking Vector Management Solution for California
September 2021



OXITEC



Grey Frandsen
Oxitec, CEO
grey@oxitec.com



Rajeev Vaidyanathan
Oxitec, Director of US Programs
rajeev.vaidyanathan@oxitec.com



Lisa Yarbrough
KP Public Affairs, Communications
lyarbrough@ka-pow.com

Additional Resources Available at: [oxitec.com](https://www.oxitec.com)

Our Mission

To improve lives and livelihoods...

...by developing safe, highly effective biologically-engineered solutions to control disease-transmitting and crop-destroying insects *at scale globally*.

Quick Facts

- Est. 2002 @ Oxford University
- Strong partnerships w/ leaders in Ag, public health
- 1 billion+ mosquitoes released to date
- 100+ peer-reviewed publications
- Proven biosafety and regulatory rulings globally
- Passionate team comprised of 15 nationalities
- Culture of trust, accountability and urgency

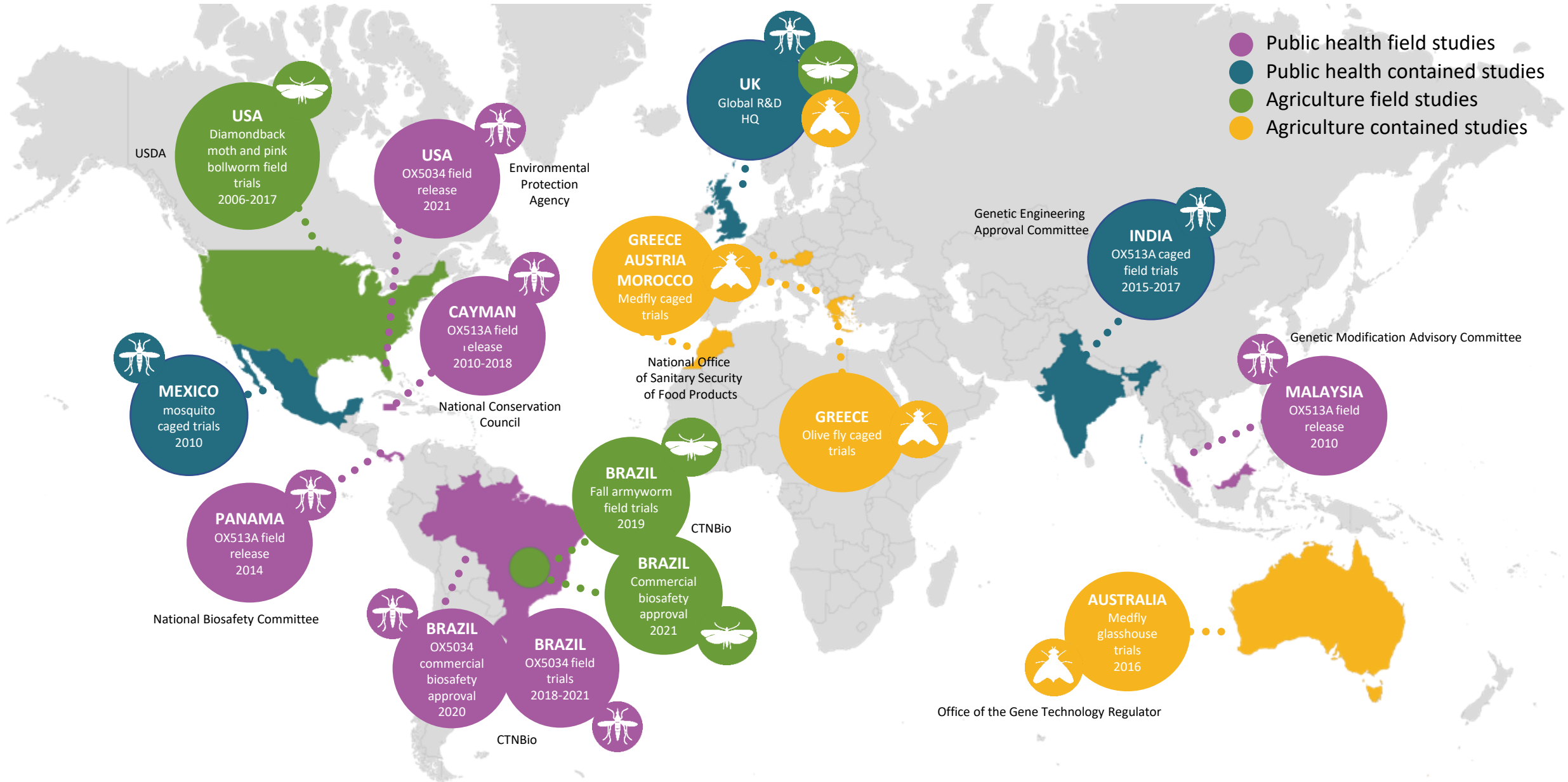
Oxitec's Friendly™ Technology Core Features



gettyimages®
Joe Raedle

- ✓ **PROVEN EFFICACY** in multiple field pilots
- 📉 **REDUCES PEST BURDEN** to very low levels
- 🛡️ **RESISTANCE MANAGEMENT** to protect other tools
- 🌱 **COST-EFFECTIVE & EASY TO USE** for customers and end-users
- 📈 **SCALABLE PRODUCTION & DISTRIBUTION** for large-scale impact
- 🤝 **SAFE & NON-TOXIC** for people, animals and the environment
- 🦋 **TARGETED & SUSTAINABLE** for ecosystems and biodiversity
- ∞ **SELF-LIMITING** in the environment - cannot persist
- 📍 **TRACEABLE IN THE FIELD** through unique insect marker
- 🦟 **BROAD APPLICABILITY** to many future target pests

10+ Years of Successful Development and Regulatory Track Record



World-Class Partners & Collaborators

Select Partners and Underwriters



Select Current & Historical Collaborators

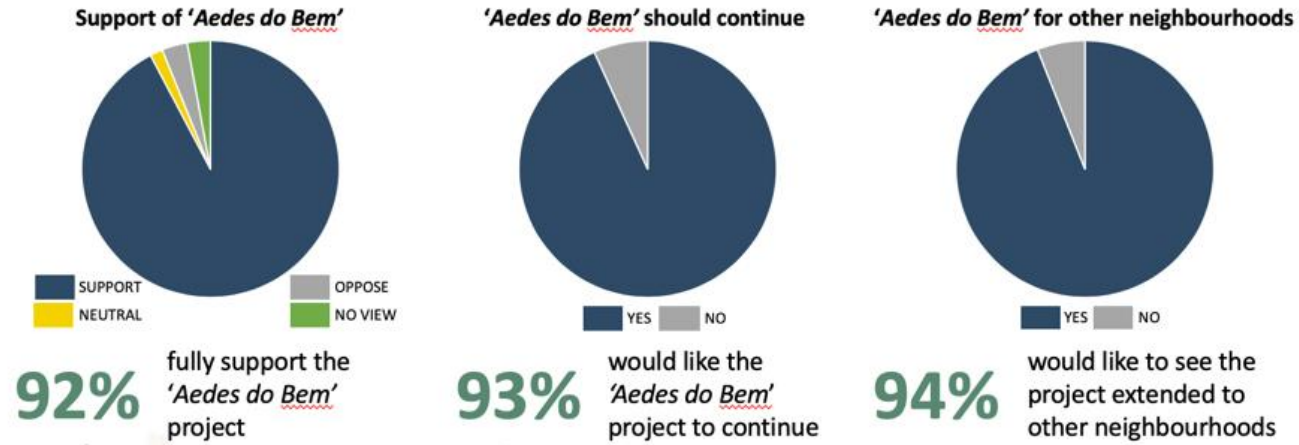


Positive Regulatory Approvals and Opinions

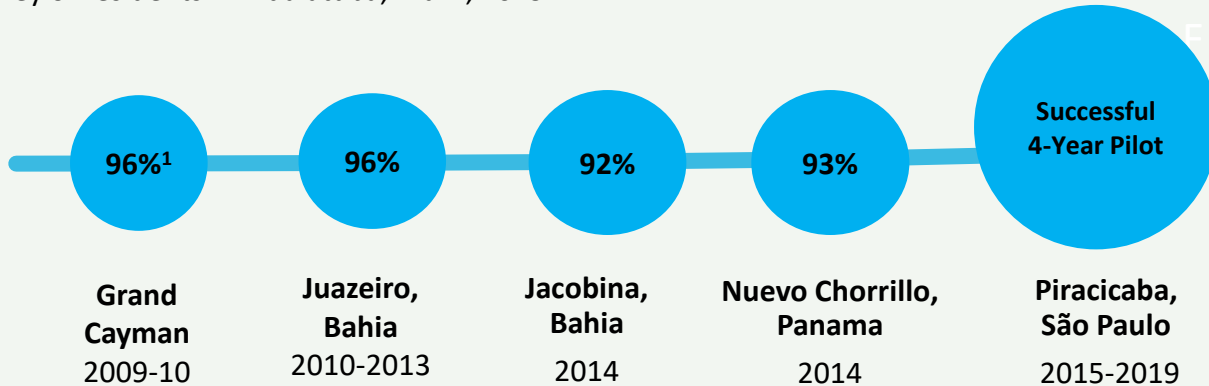


Proof-Points: More Than 1 Billion Friendly™ Mosquitoes Released Globally

Oxitec's proven vector control results are combined with exceptionally high public support in a range of markets.



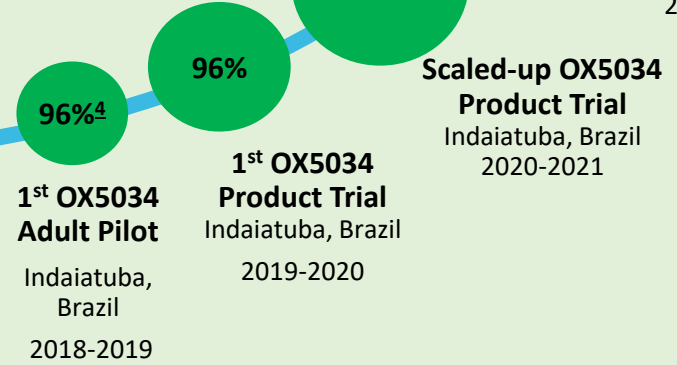
Survey of residents in Indaiatuba, Brazil, 2019



Decade of Development and Proof-points

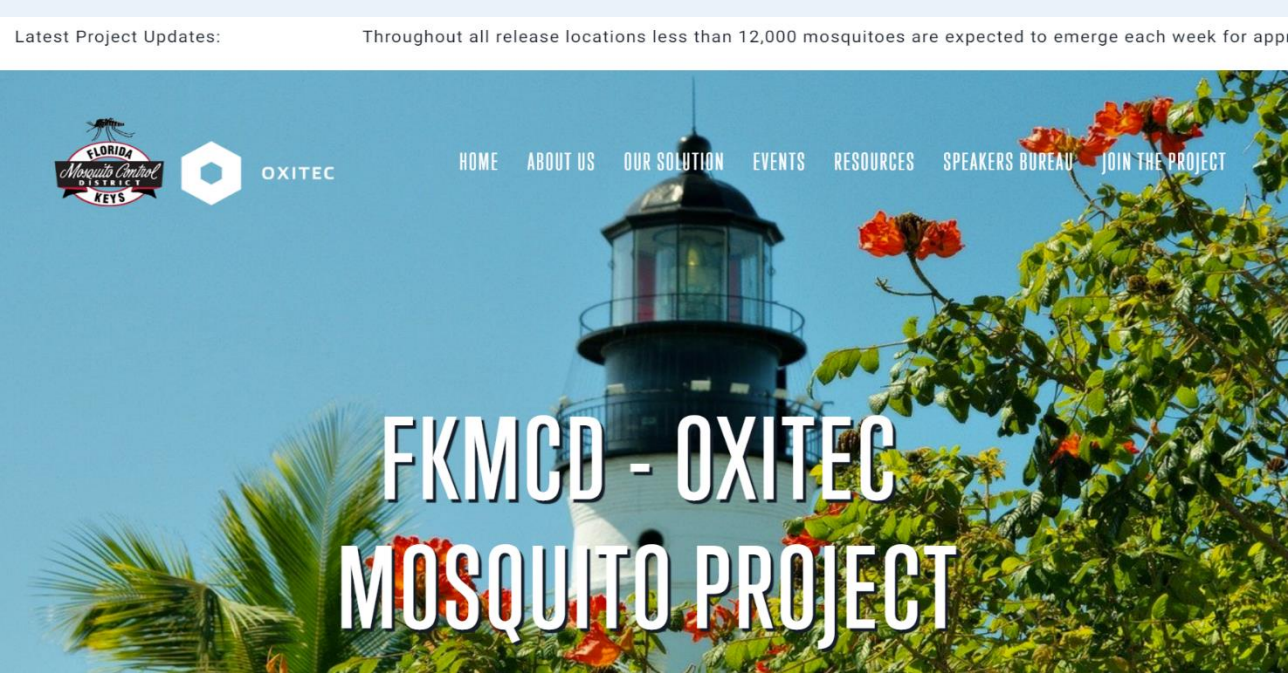


Upgrade to 2nd Generation Platform in 2018



Preparing For Commercial Launch

Extensive stakeholder and community engagement precedes and continues throughout each and every Oxitec project



OXITEC'S JUST-ADD-WATER MOSQUITO BOXES:

- Safe
- Males only – no female release & no biting
- Fully self-limiting – no persistence

MOSQUITO TRAPS:

- Evaluate the size of the mosquito population
- Determine the mosquito species
- Indicate the effectiveness of control programs

PLEASE TURN OVER TO LEARN MORE!

Beginning in spring 2021, the Florida Keys Mosquito Control District (FKMCD) and Oxitec will evaluate the effectiveness of Oxitec mosquitoes to control the invasive, disease-spreading *Aedes aegypti* mosquito in the Florida Keys.

- Oxitec mosquitoes are safe and self-limiting.
- Like all male mosquitoes, Oxitec's male mosquitoes do not bite. Females spread disease.
- The *Aedes aegypti* mosquito is the known vector of diseases including Dengue, Zika, Heartworm and other diseases.

Please visit keysmosquitoproject.com for additional resources.



Project to Control Disease-Carrying Mosquitoes Kicks...

53 views • 3 days ago



FKMCD - #Oxitec Mosquito Project Update: Emergenc...

2.1K views • 1 week ago



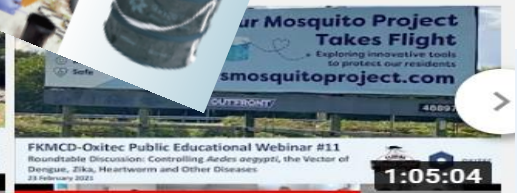
FKMCD - #Oxitec Public Educational Webinar #13

64 views • 3 weeks ago



FKMCD - #Oxitec Public Educational Webinar #12

48 views • 1 month ago



FKMCD - #Oxitec Public Educational Webinar #11

82 views • 2 months ago

- In March 2021, Oxitec submitted an application to the US EPA to amend its Experimental Use Permit (EUP) to expand its technology to California.
- The statutory timeline for a federal decision is November 2021.
- **A Notice of Receipt was published in the Federal Register (31 Aug) initiating a 30-day public comment period.**

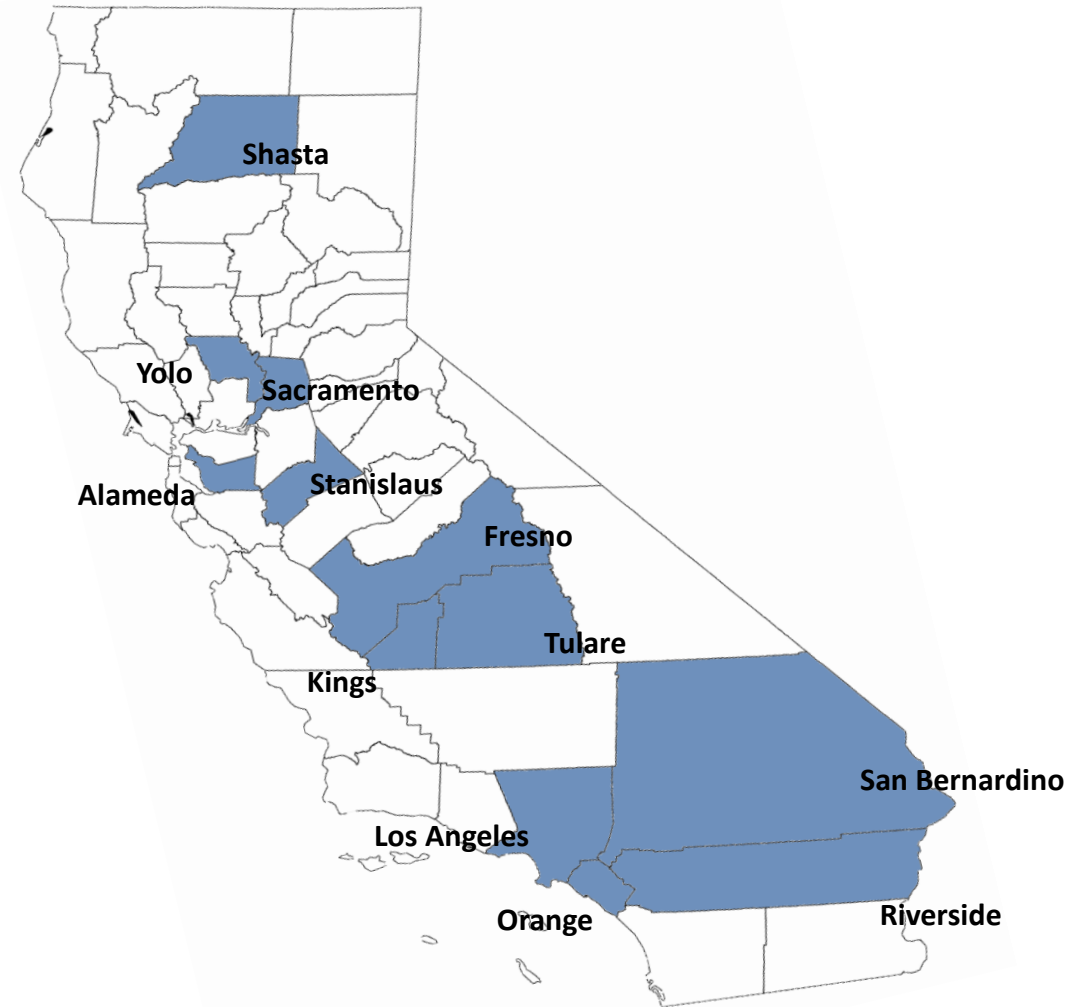
Activity	2021			2022				2023	
	Q2	Q3	Q4	Q1	Q2	Q3	Q4	Q1	Q2
Stakeholder engagement	Light Blue	Light Blue	Light Green						
Public comment period		Light Green	Light Green						
EPA review and approval	Light Blue	Light Green	Light Green						
State approval (RA from DPR)			Light Green						
Capacity building				Light Green	Light Green	Light Green	Light Green	Light Green	Light Green
Execution of field trials						Light Green	Light Green		
Post Release Monitoring								Light Green	Light Green

The CA counties that are named in the EUP include:

- Shasta, Yolo, Sacramento, Alameda, Stanislaus, Fresno, Tulare, Kings, San Bernardino, Los Angeles, Orange, and Riverside

30-day Public Comment Period:

- Comments are appreciated by EPA and can be actively solicited from third parties.
- The EPA can extend the comment period by a further 30 days if required.



The pilot project is designed to measure how far our males fly and how well they mate with invasive *Aedes aegypti* females in California.

Project Design Elements

1. Single-point releases (households)
2. Multi-point releases (neighborhoods)
3. Mark-Release-Recapture
4. Trapping offspring to evaluate efficacy
5. Replicated and compared to untreated areas
6. Anticipated duration - single mosquito season

Evaluation Elements

1. Male flight range and longevity
2. % kill of female mosquitoes
3. % of the wild population treated
4. Duration of effect (residual activity)
5. Evaluation of natural breeding sites



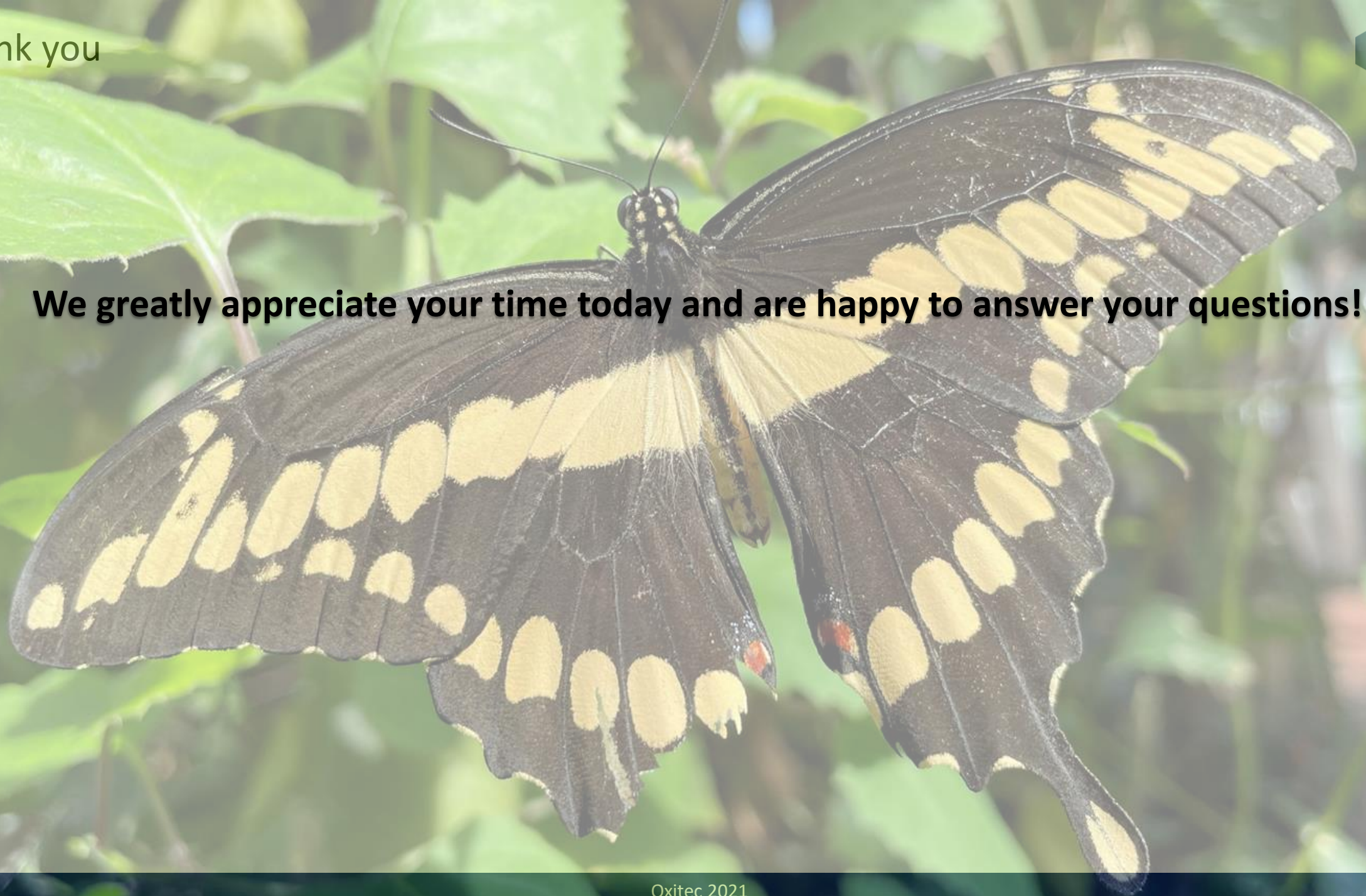
Scale and Locations still TBD

- The proposed EUP is flexible enough to permit projects of small to larger deployments (up to 100 acre plots)
- We will endeavour to work closely with relevant Districts to generate a robust evaluation program.

- **Continued engagement** with stakeholders, legislators, and the public to ensure transparency and flow of relevant information;
- **State level discussion with regulatory agencies** (Dept of Pesticide Regulation);
- **Confirm potential MCD partners** for 2022 project(s);
- **Review facility requirements** and begin preparations for the 2022 mosquito season.

Thank you

We greatly appreciate your time today and are happy to answer your questions!



4. Consent Calendar

DELTA MOSQUITO & VECTOR
CONTROL DISTRICT

Dr. Mustapha Debboun
General Manager

Post Office Box 310 * Visalia, California 93279-0310

Mir Bear-Johnson
Assistant Manager

1737 West Houston Avenue * Visalia, California 93291

Phone (559) 732-8606 * (877) 732-8606 * Fax (559)-732-7441

www.deltavcd.com

Hector Cardenas
Operations Program Manager

Crystal Grippin
Scientific Program Manager

Sheri D. Davis
Administrative Assistant

Mark Nakata
Biologist

Andrea Troupin
Biologist

Javier Valdivias
Biologist

Minutes of the Board of Trustees – Wednesday, August 11, 2021

1. Roll Call:

Present: Greg Gomez, President; Belen Gomez, Secretary, Michael Cavanagh, Larry Roberts, Linda Gutierrez, Rosemary Hellwig, and Kevin Caskey.

Absent: Dr. Mustapha Debboun, General Manager

Staff: Mir Bear-Johnson, Assistant Manager and Sheri Davis, Administrative Assistant

2. Consent Calendar:

The Administrative Assistant provided information on the following items:

Board Order #5 – 35638 Mitchell One – \$1,771.78 Annual Fleet Management Software.

Board Order #6 – ESRI – \$6,300.00 ArcGIS Annual License Fee.

After further discussion, it was moved by Kevin Caskey, seconded by Linda Gutierrez, and the Board members unanimously approved the consent calendar as presented.

3. Staff Report:

The Assistant Manager discussed the status of the season, and of employees and answered a few questions posed by the Board.

4. Surveillance Report:

The Assistant Manager reported on surveillance information for the state, central region, and local community.

5. Fiscal Budget Amended:

The Administrative Assistant presented final expense and revenue figures for the 2021-22 fiscal year budget.

Liability Insurance was increased by \$3,080.00 in response to rising costs in the insurance market.

Benefit Assessment revenue was added to the budget as Assessment Reserves.

The Budget Summary was updated to include the changes, and the beginning cash balance for the fiscal year was adjusted to actual. The Budget Summary was also updated to include language regarding the 3% merit increase for the Administrative Assistant position.

Following discussion, it was moved by Larry Roberts, seconded by Belen Gomez and the Board members unanimously approved the amended 2021-22 fiscal budget as presented.

6. Public Forum:

A member of the public from Dinuba was present and stated that she was interested in learning more about Delta Mosquito and Vector Control District. She was invited to come to the District anytime.

7. Closed Session Case Review/Planning:

Adjourned to closed session pursuant to Government Code Section 54956.9 of Division 3.6 of Title I.

8. Adjournment:

It was moved by Michael Cavanagh, seconded by Kevin Caskey, and unanimously approved to adjourn the meeting of the District Board of Trustees. The meeting was adjourned at 4:50 p.m.

Sheri Davis, Recording Secretary

35655	ERICK ARRIAGA	Community Education & Outreach Coordinator				2,454.56
35656	BRYAN RUIZ	Overtime				472.57
35657	MARIO SANCHEZ	Overtime				303.33
35658	JORGE LOPEZ	Vector Control Tech II				2,001.36
35659	ALEXANDER WARD	Vector Control Tech II				1,595.61
35660	ADRIAN SIFUENTES	Vector Control Tech II				1,739.55
35661	ALEJANDRA GILL	Lab Tech I				1,167.78
35662	JAYSON CABRAL	Lab Tech I				1,095.73
35663	LUIS GONZALEZ	Lab Tech I				558.07
35664	PATRICIA BIENIEMY	Lab Tech I				1,004.05
35665	CHRISTIAN COTTO	Lab Tech I				953.36
35666	MARICELA CISNEROS	Lab Tech I				1,118.78
35667	ADRIANNA WHITE	Lab Tech I				952.11
35668	AMANDA MARTIN	Vector Control Tech I				941.31
35669	RILEY UNRAU	Vector Control Tech I				1,001.40
35670	THOMAS HOWARD	Vector Control Tech I				855.10
35671	LORRAINE GONZALEZ	Vector Control Tech I				994.27
35672	AYLSIA INGRIM	Vector Control Tech I				849.16
35673	JACKIE JACKSON	Vector Control Tech I				953.23
35674	PAUL RAPER	Vector Control Tech I				1,040.42
35675	KORY WILSON	Vector Control Tech I				1,130.64
35676	ROSEMARIE ANTUNA	Vector Control Tech I				218.19
35677	AARON WINSTON	Vector Control Tech I				978.20
35678	DELTA VECTOR CONTROL DIST - EFTPS	Social Security/ Medicare/ Federal Income Tax				5,800.14
35679	DELTA VECTOR CONTROL DIST - EFTPS	State Income Tax				374.05
35680	DELTA VECTOR CONTROL DIST - EFTPS	CalPERS Retirement				1,395.09
		TOTAL PAYROLL				\$31,948.06
35681	ADAPCO*	BG Traps & Lures				6,177.45
35682	CAL WATER SERVICE	Utilities				130.07
35683	DELTA VECTOR CONTROL DIST - EFTPS*	GASB 68 Reporting Fee				700.00
35684	EMD NETWORKING SERVICES					4,403.45
		September Monthly Contract	1,953.70		Maint Contract	
		Conference Phone, Power Outlet, Printers	2,449.75		Office Supplies	
35685	ESRI*	ArcGIS License Annual Fee			Subscriptions	6,300.00
35686	HARBOR FREIGHT	Drop Cloths, Wrenches, Screwdrivers, Pliers, Tape, etc			Auto Supplies	102.83
35687	JOHANSON & THOMAS cancel	Cut Metal			Fish Supplies	41.23
35688	LIFE TECHNOLOGIES*	MagMax Kits, Plates, Tips (Disease Testing)			Lab Supplies	2,974.72
35689	LINUXP	GPS			GPS	659.67
35690	LOWE'S					116.67
		PVC, Coupling, 2 Inch Sweep	24.46		Fish Supplies	
		Flex Tape	26.76		Lab Supplies	
		Power Strip, Blue Tape, Cat G Cable	65.45		Office Supplies	
35691	LOZANO SMITH	Review Resolution and Attend Board Meeting - Public Hearing			Professional Services	653.35
35692	OFFICE DEPOT	Printer and Toner			Office Supplies	495.26
35693	PURE SUN	Solar Pannel Cleaning			Bldg/Yard Maint	165.00
35694	SACRAMENTO KOI	Vacuum, Feeder, Lamps, Water Filters			Fish Supplies	1,856.83
35695	SMART & FINAL					346.61
		Gatorade	41.94		Safety Supplies	
		Sugar for Traps	119.96		Lab Supplies	
		Breakroom Supplies, Cleaning Supplies	184.71		Bldg/Yard Supplies	
35696	SO CAL GAS COMPANY	Utilities			Utilities	27.91
35697	TARGET SPECIALTY PRODUCTS	Altosid WSP			Chemicals	7,638.40
35698	TULARE COUNTY REGISTRAR OF VOTERS	Assessment Ballot Tabulation			Professional Services - Assessment	2,870.59
35699	VALLEY INDUSTRIAL MEDICAL GROUP	Pre-Employment Exam; Direct Pay non-injury			Professional Services	900.20
35700	VALLEY PACIFIC PETROLEUM	Gasoline			Gasoline	4,597.47
		TOTAL BILLS				\$41,157.71
		TOTAL BOARD ORDER #6				\$73,105.77

VOUCHER	PAYEE	DESCRIPTION	Budget Line Item	AMOUNT
35701	MUSTAPHA DEBBOUN	MANAGER		7,754.42
35702	MIR BEAR-JOHNSON	ASSISTANT MANAGER		6,112.33
35703	CRYSTAL GRIPPIN	SCIENTIFIC PROGRAM MANAGER		4,057.36
35704	HECTOR CARDENAS	OPERATIONS PROGRAM MANAGER		5,270.55
35705	MARK NAKATA	BIOLOGIST		5,354.14
35706	JAVIER VALDIVIAS	BIOLOGIST		4,599.01
35707	ANDREA TROUPIN	BIOLOGIST		4,787.09
35708	SHERI DAVIS	ADMINISTRATIVE ASSISTANT		5,536.97
35709	MARY ELLEN GOMEZ	ADMINISTRATIVE ANALYST		4,196.74
35710	ERICK ARRIAGA	COMMUNITY EDUCATION & OUTREACH COORDINATOR		4,123.75
35711	PAUL HARLIEN	FOREMAN		5,157.77
35712	RICK ALVAREZ	VECTOR CONTROL SUPERVISOR		5,349.04
35713	BRYAN RUIZ	VECTOR CONTROL TECHNICIAN III		4,391.70
35714	BRYAN FERGUSON	VECTOR CONTROL TECHNICIAN III/MECHANIC		4,530.01
35715	MARIO SANCHEZ	VECTOR CONTROL TECHNICIAN III/MECHANIC		4,042.95
		<i>Sub-Total Full-Time Payroll</i>		\$75,263.83
35716	VSP	Vision Plan Premium for September 2021		444.06
35717	DELTA DENTAL PLAN	Dental Plan Premium for September 2021		1,286.59
35718	LINCOLN FINANCIAL GROUP	Life/STD & LTD Insurance for September 2021		1,185.97
35719	DELTA VECTOR CONTROL DIST - EFTPS	CalPERS Health Insurance Premium for September 2021		25,252.30
35720	DELTA VECTOR CONTROL DIST - EFTPS	Social Security/ Medicare/ Federal Income Tax	Employee 71% - District 29%	30,977.48
35721	DELTA VECTOR CONTROL DIST - EFTPS	State Income Tax	Employee 100%	5,040.33
35722	DELTA VECTOR CONTROL DIST - EFTPS	CalPERS Retirement	Employee 40% - District 60%	19,270.02
35723	DELTA VECT CONT DIST	Flex Benefit Plan	Employee 100%	1,022.63
35724	ICMA RETIREMENT TRUST	Deferred Retirement Trust	Employee 77% - District 23%	2,438.08
		<i>Sub-Total for Payroll Taxes & Benefits</i>		\$86,917.46
		<i>Total Regular Payroll & Benefits</i>		\$162,181.29
35725	JORGE LOPEZ	Vector Control Tech II		2,001.36
35726	ADRIAN SIFUENTES	Vector Control Tech II		1,739.55
35727	ALEX WARD	Vector Control Tech II		1,514.61
35728	ALEJANDRA GILL	Lab Tech I		1,157.24
35729	ADRIANA WHITE	Lab Tech I		809.16
35730	JAYSON CABRAL	Lab Tech I		1,095.73
35731	SABRINA GALBAN	Lab Tech I		15.35
35732	PATRICIA BIENIEMY	Lab Tech I		1,102.40
35733	MARICELA CISNEROS	Lab Tech I		1,118.78
35734	RYAN SPRATT	Lab Tech I		899.61
35735	AMANDA MARTIN	Vector Control Tech I		439.74
35736	RILEY UNRAU	Vector Control Tech I		109.94
35737	CHRISTIAN COTTO	Vector Control Tech I		1,051.65
35738	THOMAS HOWARD	Vector Control Tech I		855.10
35739	LORRAINE GONZALEZ	Vector Control Tech I		1,111.24
35740	AYLSIA INGRIM	Vector Control Tech I		926.21
35741	JACKIE JACKSON	Vector Control Tech I		869.53
35742	PAUL RAPER	Vector Control Tech I		1,121.84
35743	KORY WILSON	Vector Control Tech I		1,106.71
35744	MARCO MARTINEZ	Vector Control Tech I		723.88
35745	AARON WINSTON	Vector Control Tech I		775.55
35746	DELTA VECTOR CONTROL DIST - EFTPS	Social Security/ Medicare/ Federal Income Tax		4,995.04
35747	DELTA VECTOR CONTROL DIST - EFTPS	State Income Tax		314.03
35748	DELTA VECTOR CONTROL DIST - EFTPS	CalPERS Retirement		1,097.91
		<i>Sub-Total for Seasonal Payroll & Taxes</i>		\$26,952.16

			<i>Total All Payroll and Benefits</i>		\$189,133.45
35749	AT&T	Long Distance/Toll Free		Telephone/Cell Phones	26.23
35750	AWARDS & SIGNS UNLIMITED	Desk Nameplate - Erick Arriaga		Office Supplies	56.96
35751	CITY OF VISALIA	Solid Waste Disposal		Utilities	126.85
35752	COMCAST BUSINESS	Internet		Telephone/Cell Phones	220.73
35753	DELTA MVCD REVOLVING FUND				507.16
		USPS - 2nd Letter to Walt Stutsman	26.35	Office Supplies	
		Winco - Yeast for Traps	35.76	Lab Supplies	
		West Coast Tow - T2	393.75	Misc. Expense	
		Mustapha Debboun - Costco for Staff Meeting	30.37	Misc. Expense	
		Sheri Davis - Panera for Staff Meeting	20.93	Misc. Expense	
35754	EMD NETWORKING SERVICES				2,344.30
		Monthly Contract - September	1,953.70	Maint Contracts	
		Upgrade for Phone System Computer	390.60	Office Supplies	
35755	ENTERPRISE FM TRUST	Leased Vehicles (3)		Capital - Vehicles	1,267.65
35756	FRESNO OXYGEN	Dry Ice		Lab Supplies	561.47
35757	LIFE TECHNOLOGIES	Plates for Disease Testing		Lab Supplies	478.49
35758	MISSION LINEN				1,396.15
		Uniforms	1,238.27	Clothing	
		Janitorial	157.88	Janitorial	
35759	MVCAC	Conference Registration - 5 Employees		Travel	1,625.00
35760	NAPA AUTO PARTS	Battery, Blower Motor, Bulbs		Auto Supplies	127.23
35761	NAVIA	Flexible Benefit Plan Admin Fee		Professional Services	91.00
35762	PACIFIC WEST CONTROLS	Monthly Service Contract		Maint Contracts	250.00
35763	PRAXAIR	Dry Ice		Lab Supplies	70.68
35764	SBC	Office Phone/Fax		Telephone/Cell Phones	196.80
35765	SMART & FINAL				91.21
		Gatorade	30.50	Safety Supplies	
		Cleaning Supplies	60.71	Bldg/Yard Supplies	
35766	SO CALIF EDISON	Utilities		Utilities	4,172.53
35767	U LINE	Steel Work Table		Lab Supplies	431.60
35768	US BANK				3,138.96
		Tulare County Surplus Store - White Board, Monitors, Hole Punch, Binders, etc.	41.02	Office Supplies	
		SOVE - Virtual Conference; Dr. Debboun, Mir	360.00	Travel	
		Sacramento Koi - Swing Check Valve, Replacement Pump Union	82.74	Fish Supplies	
		Target - Isopropyl	21.59	Lab Supplies	
		Johanson & Thomas - Cut Metal	41.23	Fish Supplies	
		Houston Feed - Rabbit Feed for Traps	18.00	Lab Supplies	
		Indeed - Job Ads	410.62	Advertisements	
		Amazon - Solo Pump Repair Kits, Plastic Dispensers w/Caps	217.90	Operational Supplies	
		Amazon - Track Roller for Front Gate	25.50	Bldg/Yard Supplies	
		E Trailer Corp. - Aluminum Ramps	258.60	Auto Supplies	
		Zoho Social - Add CEOC Erick Arriaga	83.56	Public Relations	
		ESA - Conference Registration, Dr. Debboun	355.00	Travel	
		La Mejor - Lunch w/Greg	23.62	Travel	
		CSDA - Application for Certificate in Special District Governance	65.00	Misc. Expense	
		Filterbuy.com - MERV Air Filters	206.25	Bldg/Yard Supplies	
		Costco - Gatorade	129.52	Safety Supplies	
		Costco - Paper Products, Cleaning Supplies	60.93	Bldg/Yard Supplies	
		Dream Host - Website Hosting	6.00	Subscriptions	
		Google Suites	132.00	Subscriptions	
		Creative Cloud - Graphics Program for CEOC	599.88	Subscriptions	
35769	VALLEY PACIFIC PETROLEUM	Gasoline		Gasoline	4,365.54

35770	WALMART				53.18
		Gatorade	37.08	Safety Supplies	
		Flat Sheet for Traps	16.10	Lab Supplies	
35771	WEST COAST BIO-TECH	Bio-Hazzard Waste Disposal		Lab Supplies	135.00
35772	WIZIX	Annual Maint Contract for Copy Machine		Maint Contracts	682.07
			<i>Total Bills</i>		<i>\$22,416.79</i>
			TOTAL BOARD ORDER #7		\$211,550.24

CLAIM #	PAYEE	DESCRIPTION	Budget Line Item	AMOUNT
	JORGE LOPEZ	Vector Control Tech II		2,001.36
	ALEXANDER WARD	Vector Control Tech II		1,595.61
	ADRIAN SIFUENTES	Vector Control Tech II		1,739.55
	ALEJANDRA GILL	Lab Tech I		1,157.24
	JAYSON CABRAL	Lab Tech I		1,095.73
	PATRICIA BIENIEMY	Lab Tech I		1,102.40
	CHRISTIAN COTTO	Lab Tech I		1,051.65
	MARIGELA CISNEROS	Lab Tech I		1,118.78
	ADRIANNA WHITE	Lab Tech I		952.11
	RYAN SPRATT	Lab Tech I		952.11
	AMANDA MARTIN	Vector Control Tech I		941.31
	THOMAS HOWARD	Vector Control Tech I		952.11
	LORRAINE GONZALEZ	Vector Control Tech I		1,111.24
	AYLSIA INGRIM	Vector Control Tech I		926.21
	JACKIE JACKSON	Vector Control Tech I		952.11
	PAUL RAPER	Vector Control Tech I		1,040.42
	KORY WILSON	Vector Control Tech I		1,130.64
	MARCO MARTINEZ	Vector Control Tech I		952.11
	AARON WINSTON	Vector Control Tech I		978.20
	DELTA VECTOR CONTROL DIST - EFTPS	Social Security/ Medicare/ Federal Income Tax		5,008.14
	DELTA VECTOR CONTROL DIST - EFTPS	State Income Tax		325.05
	DELTA VECTOR CONTROL DIST - EFTPS	CalPERS Retirement		1,097.91
		TOTAL PAYROLL		\$28,181.99
	<i>Bills Added After 9/3/2021:</i>			
	SCI CONSULTING GROUP	Benefit Assessment Formation	Professional Services	148,173.36
	VWR INTERNATIONAL	Sterile Water	Lab Supplies	28.39
	VALLEY INDUSTRIAL MEDICAL GROUP	Pre-Employment Exams	Professional Services	250.00
	VERIZON	Cell Phones	Telephone/Cell Phones	732.40
		TOTAL BILLS		\$149,184.15

5. Public Forum

Members of the public may address the Board.

6. Staff Report

The General Manager will report on items of operational interest.

DELTA MOSQUITO & VECTOR CONTROL DISTRICT

Dr. Mustapha Debboun
General Manager

Post Office Box 310 * Visalia, California 93279-0310

Mir Bear-Johnson
Assistant Manager

1737 West Houston Avenue * Visalia, California 93291

Phone (559) 732-8606 * (877) 732-8606 * Fax (559)-732-7441

www.deltavcd.com

Hector Cardenas
Operations Program Manager

Crystal Grippin
Scientific Program Manager

Sheri D. Davis
Administrative Assistant



Erick Arriaga
*Community Education and
Outreach Coordinator*

REPORT OF THE MANAGER AUGUST 2021

I. Water and Weather

There were several heat waves throughout the month of August. The Delta Mosquito and Vector Control District (DMVCD) Weather Station reported an average high temperature of 97.9°F with an average low of 68.0°F and 0 inches of rainfall. The National Oceanic and Atmospheric Administration 1981-2010 seasonal averages for high and low temperatures in August were 92.8°F and 65.0°F respectively, with an average rainfall of 0.01 inches.

Water storage at Pine Flat Reservoir decreased to 197,968 acre-feet by the end of the month. By August 31, 2021, Pine Flat Reservoir's inflow had decreased to 391 cubic feet per second (CFS) and its release decreased dramatically to 254 CFS. The Lake Kaweah Reservoir ended the month with less water than the previous month, with 26,452 acre-feet on August 31, 2021. Lake Kaweah's inflow fluctuated dramatically at the end of the month, with the reading from August 31, 2021, showing 17 CFS and its release was decreased significantly to 51 CFS.

II. Narrative

Continuous treatment of the storm drain systems continued during the month of August throughout the District's jurisdiction. Approximately 11,824 storm drains were treated with an insect growth hormone regulator product, methoprene. Sites include street drains, parking lots, parks, apartment complexes, and schools.

Aerial larviciding treatment for the Kaweah River Rock Plant Continued for the month of August, with the fifth treatment taking place on August 17, 2021. During the application 8 acres were treated with an insect growth hormone regulator.

Due to high mosquito counts in the rural portion of the District, we continued large *Bacillus thuringiensis* serotype *israelensis* (Bti) applications to reduce the mosquito populations near dense corn crops in the north region of Visalia. On August 24, 2021, the District conducted an adult mosquito application to reduce the viral transmission and high abundance of mosquitoes.

Due to high West Nile virus activity, operations conducted adult mosquito treatments on August 18th, 2021. The treatment was conducted on the NW section of Visalia covering approximately 1.13 square miles area. On August 19th, the District conducted an adult mosquito treatment on the SW side of Visalia and various locations in the city of Dinuba covering approximately 819 acres in total. On August 25th, Operations conducted an adult mosquito treatment in a rural portion of Exeter to reduce high abundance of mosquitoes due to a flooded walnut grove.

Due to high *Aedes aegypti* mosquito abundance the District decided to conduct a trial application technique called Wide Area Larvicide (WAL). WAL’s is a technique to target *Aedes aegypti* and its cryptic breeding locations. The application technique consists of roughly 6-8 applications. The first 4 applications are conducted on a weekly period, and the following 2-4 applications bi-weekly. The first WAL application was conducted on August 5th in the SE area of Visalia between Tulare Ave and E. Walnut Ave. covering over a 40-acre area. Typical applications take place between the hours of 12:00 a.m. and 3:00 a.m. The District will continue to conduct applications in the month of September and monitor mosquito traps for abundance of *Aedes aegypti* for application efficacy.

During the week starting with August 23, 2021, a Lab Technician I and a Vector Control Technician I joined the team to fill vacant seasonal staff positions.

Routine mosquito surveillance continued throughout August. A total of 30,751 mosquitoes were collected across 1,132 trap nights. The District-wide average of 27.2 mosquitoes per trap night for the month of August is 32.4% higher than the previous 5-year average of 20.5 but only 15.1% higher than the 2020 average of 23.6 mosquitoes per trap night. The top 3 mosquito species caught in August were *Culex quinquefasciatus* at 71.1%, followed by *Aedes aegypti* at 15.3% and *Culex tarsalis* at 8.7%.

Mosquito-borne disease testing for West Nile virus (WNV), St. Louis Encephalitis virus (SLEV), and Western Equine Encephalitis virus (WEEV) continued throughout August. Arbovirus activity in mosquitoes increased dramatically in August compared to the previous month. The DMVCD tested 594 mosquito samples in August with 120 samples positive for WNV. One dead bird carcass was also tested for WNV, SLEV, and WEEV but was not positive. The WNV positive mosquito samples were collected from Visalia, Exeter, Farmersville, Dinuba, Peral, Traver, south Kings River, and west of Sequoia Fields.

2021 YTD Arbovirus Detections					
SAMPLE	WNV	SLEV	WNV & SLEV	WEEV	TOTAL
Mosquitoes	166	0	0	0	166
Dead Birds	5	0	0	0	5
TOTAL	171	0	0	0	171

2021 YTD Arbovirus Detections by City					
CITY	WNV	SLEV	WNV & SLEV	WEEV	TOTAL
Cutler	0	0	0	0	0
Dinuba	14	0	0	0	14
Exeter	1	0	0	0	1
Farmersville	2	0	0	0	2
Goshen	0	0	0	0	0
Ivanhoe	0	0	0	0	0
Kingsburg*	0	0	0	0	0
London	0	0	0	0	0

Orosi	0	0	0	0	0
Peral	5	0	0	0	5
Sequoia Fields	12	0	0	0	12
S Kings River	12	0	0	0	12
Traver	1	0	0	0	1
Visalia	124	0	0	0	124
Woodlake	0	0	0	0	0
TOTAL	171	0	0	0	171
* DMVCD only serves the eastern, southeastern outside city limit area of Kingsburg. Consolidated MAD serves the city of Kingsburg.					

In August 2021, 63 larval mosquito samples were collected from the field for species identification and larvicide resistance monitoring. No larvicide resistance was observed. Potential adulticide resistance was detected in *Culex quinquefasciatus* mosquitoes from an area west of Sequoia Fields, and, to a lesser extent, just north of Visalia. Further tests are planned to confirm and identify the mechanism of resistance.

Mosquitofish requests decreased for the month of August. A total of 459 mosquitofish were distributed through 11 technician and 9 homeowner requests. Fry, or young mosquitofish, production has also decreased to 244.

Erick Arriaga joined the DMVCD team as the Community Education and Outreach Coordinator on August 16, 2021.

On August 25, 2021, a seasonal technician was in a vehicle accident while driving truck T-2. Following insurance protocol, the truck will be scrapped, and the district reimbursed for a replacement truck after \$1,000 deductible. The driver of the truck is not seriously injured.

On August 27, 2021, the District held a meeting for all full-time staff to better facilitate communication between all staff members. The intention is to continue these meetings on a quarterly basis.

Throughout July, employees who were not fully vaccinated continued to complete the online screening of COVID-19 survey and take paid time off to seek test results when required. The District will continue to be proactive in keeping employees and the public safe. Staff are encouraged to be fully vaccinated and allowed to take work time to do so.

There were 174 service requests in August:

2021 Service Request Summary

2021	Fish	Inspection	Mosquito	Source	Other	Total
January	0	0	1	2	0	3
February	0	0	0	2	0	2

March	0	0	7	17	3	27
April	19	9	11	26	3	68
May	31	51	4	27	2	115
June	23	88	36	34	1	182
July	14	33	64	46	2	159
August	10	14	94	56	0	174
Total	97	195	217	210	11	730

III. Vector and Disease Surveillance

Delta MVCD Summaries

Humans: There was 1 confirmed and 1 probable human case of WNV reported by the local public health department in the month of August. These are the first cases in the District.

Birds: There was 1 dead bird reported to the District in August, with 0 positive for WNV. In 2021, a total of 5 dead birds were positive for WNV out of 12 dead birds tested.

Mosquitoes: There were 120 new WNV positive mosquito samples out of 594 tested in August. In 2021, a total of 166 mosquito samples were positive for WNV out of 1,642 tested.

State Surveillance:

Humans: A total of 22 human cases have been reported as of August 27, 2021. So far in 2021, 26 human cases of WNV were reported in 12 counties across the state.

Birds: As of August 27, 2021, 61 dead birds have tested positive for WNV. So far, 155 dead birds from 16 counties have tested positive for WNV out of 1,229 tested in 2021.

Mosquitoes: As of August 27, 2021, 919 mosquito samples were positive for WNV. In 2021, a total of 24,658 mosquito samples were tested for WNV, SLEV, and WEEV with 1,482 samples from 24 counties positive for WNV. An additional 19 mosquito samples were positive for SLEV as well.

IV. Expenditures & Revenues – 2021/22

TOTAL BUDGET \$3,977,152.78

EXPENDITURES – July 1, 2021 – August 31, 2021

Salaries	\$665,207.51
Services & Supplies	\$220,439.43
Tax Admin Fee	\$0.00
Capital	\$72,259.27
Building Improvements	\$0.00
TOTAL EXPENDITURES	\$957,906.21

REVENUE RECEIVED – July 1, 2021 – August 31, 2021

July	\$137.48
August*	
TOTAL REVENUE TO DATE	\$137.48

V. Time Sheet Summary

Month	Available Work Hrs	Sick Hrs Used	Total Hrs Available for Work	Pct. Of Hrs Avail for Work
July	5,376	119.25	5,256.75	97.79
August	5,808	210.00	5,598.00	96.40

The District has a vacation policy that requires 24-hour notice in order to ensure the operational integrity of the workforce. Sick leave for doctor, dentist and/ or family medical necessity also requires advance notice- in so much as it is possible. Illness is unplanned and therefore unscheduled. Attendance records for the current year are shown in the table.

**August Revenue not available from Tulare County as of 9/3/21.*

7. Surveillance Report

The Assistant Manager will report on surveillance information for the state, region, and local community.

California Arbovirus Surveillance Bulletin #19

Week 35 Friday, September 3, 2021



Weekly Update

Humans

A total of 6 human cases of West Nile virus (WNV) illness were reported this week from 5 counties: Butte (2), Glenn (1), Madera (1), San Joaquin (1), and Yolo (1). **These are the first human WNV cases reported from Madera and Yolo counties this year.** In 2021, a total of 32 WNV human cases have been reported from 14 counties. Of the 32 cases, 16 (50%) had neuroinvasive illness and 2 (6.3%) were fatal. The median age of the cases was 58 years, and 18 (56%) were male. Dates of symptom onset ranged from March 31 to August 17. In addition to the 32 cases, 8 asymptomatic WNV infections have been reported from Butte (1), Kern (1), Kings (2), Los Angeles (2), San Bernardino (1), and San Joaquin (1) counties. At this time last year, 35 WNV cases had been reported from 10 counties.

Dead Birds

A total of 5 WNV positive dead birds were reported this week from 3 counties: Los Angeles (3), Sacramento (1), and San Joaquin (1). In 2021, 160 WNV positive dead birds have been reported from 16 counties. At this time last year, 142 WNV positive dead birds had been reported from 17 counties.

Mosquito Pools

West Nile virus

A total of 164 WNV positive mosquito pools were reported this week from 17 counties: Butte (1), Contra Costa (1), Fresno (7), Kern (4), Los Angeles (29), Madera (5), Orange (7), Placer (4), Riverside (7), Sacramento (14), San Joaquin (29), Shasta (3), Solano (4), Stanislaus (27), Sutter (1), Tulare (15), and Yolo (6). In 2021, 1,646 WNV positive mosquito pools have been reported from 24 counties. At this time last year, 1,420 WNV positive mosquito pools had been reported from 26 counties.

St. Louis encephalitis virus

No new positives were reported this week. In 2021, 19 St. Louis encephalitis virus (SLEV) positive mosquito pools have been reported from Fresno (1), Imperial (3), and Riverside (15) counties. At this time last year, 268 SLEV positive mosquito pools had been reported from 8 counties.

Sentinel Chickens

A total of 2 WNV positive chickens were reported this week from Tulare County. In 2021, 45 WNV positive chickens have been reported from 9 counties. At this time last year, 41 WNV positive chickens had been reported from 6 counties.

Website Information: For updated information on WNV in California, please visit the California WNV website, www.westnile.ca.gov, or the California Vectorborne Disease Surveillance System website, www.maps.calsurv.org. For national information on WNV and other arboviruses, please visit the CDC websites: www.cdc.gov and www.cdc.gov/arbovet/maps/ADB_Diseases_Map/index.html

California Arbovirus Surveillance Bulletin #19

Week 35 Friday, September 3, 2021

YTD WNV Activity by Element and County, 2021					
County	Humans	Horses	Dead Birds	Mosquito Pools	Sentinel Chickens
Butte	10		2	77	19
Contra Costa			1	5	
Fresno	3	2		194	
Glenn	2				
Kern	2			81	
Kings		1		26	
Lake				2	2
Los Angeles	1		32	158	
Madera	1			111	
Merced	2	1	1	5	14
Nevada			1		
Orange				22	
Placer			3	55	
Riverside				81	
Sacramento		2	86	73	
San Bernardino			1	7	
San Joaquin	2		16	295	
San Luis Obispo	2				
Santa Clara				2	
Shasta	1			28	1
Solano	1		2	12	
Sonoma			1	1	
Stanislaus	3		2	113	
Sutter			1	17	3
Tehama					1
Tulare	1		7	242	3
Ventura			1		
Yolo	1		3	28	1
Yuba				11	1
Totals	32	6	160	1,646	45

California Arbovirus Surveillance Bulletin #19

Week 35 Friday, September 3, 2021

2020 & 2021 YTD West Nile Virus Comparisons		
	2020	2021
Total # Dead Bird Reports	3,820	4,041
# Positive Counties	29	29
# Human Cases	35	32
# Positive Dead Birds / # Tested	142 / 1,042	160 / 1,270
# Positive Mosquito Pools / # Tested	1,420 / 27, 078	1,646 / 25,963
# Seroconversions / # Tested	41 / 4,334	45 / 4,104

TESTING SUMMARIES

Humans

		WNV	SLEV	WEEV
Human Cases	Week	6	0	0
	YTD	32	0	0

Dead Birds

		Number Tested	WNV Positive
Dead Birds	Week	41	5
	YTD	1,270	160

Sentinel Chickens

		Number Tested	WNV Positive	SLEV Positive	WEEV Positive
Chicken Sera	Week	195	2	0	0
	YTD	4,104	45	0	0

Mosquitoes

		Positive / Total Tested					
		WNV	SLEV	WEEV	CHIK	DENV	ZIKA
Mosquito Pools	Week	164 / 1,305	0 / 1,260	0 / 1,098	0 / 59	0 / 59	0 / 59
	YTD	1,646 / 25,963	19 / 24,136	0 / 22,212	0 / 439	0 / 439	0 / 439

California Arbovirus Surveillance Bulletin #19

Week 35 Friday, September 3, 2021

NEW POSITIVES

Dead Birds

County	Agency	City	Zip Code	Species	Date Reported	Virus
Los Angeles	Greater Los Angeles Co VCD - SFS	Long Beach	90808	American Crow	8/24/2021	WNV
Los Angeles	Los Angeles Co West VCD	Torrance	90504	Unknown - Crow or Raven	8/26/2021	WNV
Los Angeles	San Gabriel Valley MVCD	West Covina	91790	American Crow	8/30/2021	WNV
Sacramento	Sacramento-Yolo MVCD	Carmichael	95608	Yellow-billed Magpie	8/29/2021	WNV
San Joaquin	San Joaquin Co MVCD	Manteca	95336	House Finch	8/28/2021	WNV

Mosquitoes

County	Site Code	Pool #	Species	City	# in Pool	Trap Type	Collected	Virus
Butte	BUCO22	352	Cx. tarsalis	Oroville	50	CO2	8/24/2021	WNV
Contra Costa	CNTR8202	1518	Cx. pipiens	Discovery Bay	50	CO2	8/31/2021	WNV
Fresno	CNSL3241	736	Cx. quinquefasciatus	Reedley	50	GRVD	8/26/2021	WNV
Fresno	CNSL3471	732	Cx. quinquefasciatus	Reedley	50	GRVD	8/24/2021	WNV
Fresno	CNSL9010	734	Cx. quinquefasciatus	Clovis	12	GRVD	8/26/2021	WNV
Fresno	CNSL9223	733	Cx. quinquefasciatus	Fresno	41	GRVD	8/24/2021	WNV
Fresno	FRNO112	471	Cx. quinquefasciatus	Fresno	50	GRVD	8/26/2021	WNV
Fresno	FRNO249	473	Cx. tarsalis	Fresno	10	CO2	8/26/2021	WNV
Fresno	FRWS400003	281	Cx. quinquefasciatus	Mendota	50	GRVD	8/31/2021	WNV
Kern	KERN111	394	Cx. tarsalis	Arvin	50	CO2	8/24/2021	WNV
Kern	KERN2031	400	Cx. quinquefasciatus	Bakersfield	24	GRVD	8/26/2021	WNV
Kern	KERN3030	395	Cx. quinquefasciatus	Shafter	22	CO2	8/24/2021	WNV
Kern	KERN3030	396	Cx. tarsalis	Shafter	34	CO2	8/24/2021	WNV
Los Angeles	GRLA2097	567	Cx. quinquefasciatus	La Mirada	50	GRVD	8/26/2021	WNV
Los Angeles	GRLA2268	573	Cx. quinquefasciatus	Cerritos	44	GRVD	8/26/2021	WNV
Los Angeles	GRLA2278	564	Cx. quinquefasciatus	Long Beach	50	BGSENT	8/25/2021	WNV
Los Angeles	GRLA2724	5614	Cx. quinquefasciatus	Winnetka	50	GRVD	8/25/2021	WNV
Los Angeles	GRLA2953	569	Cx. quinquefasciatus	Santa Fe Springs	50	GRVD	8/26/2021	WNV
Los Angeles	GRLA2955	571	Cx. quinquefasciatus	Cerritos	50	GRVD	8/26/2021	WNV
Los Angeles	GRLA2995	5612	Cx. quinquefasciatus	Woodland Hills	34	GRVD	8/25/2021	WNV
Los Angeles	GRLA3036	5617	Cx. quinquefasciatus	Canoga Park	50	GRVD	8/25/2021	WNV
Los Angeles	GRLA3038	5625	Cx. quinquefasciatus	Valley Village	45	GRVD	8/26/2021	WNV
Los Angeles	GRLA3041	572	Cx. quinquefasciatus	Artesia	50	GRVD	8/26/2021	WNV
Los Angeles	GRLA3046	548	Cx. quinquefasciatus	Bellflower	50	GRVD	8/24/2021	WNV
Los Angeles	GRLA3059	550	Cx. quinquefasciatus	Paramount	50	GRVD	8/24/2021	WNV
Los Angeles	GRLA3060	570	Cx. quinquefasciatus	Norwalk	50	GRVD	8/26/2021	WNV
Los Angeles	GRLA3069	5626	Cx. quinquefasciatus	Valley Village	29	GRVD	8/26/2021	WNV
Los Angeles	SGVA1000	890	Cx. quinquefasciatus	Azusa	50	GRVD	9/1/2021	WNV
Los Angeles	SGVA1216	855	Cx. quinquefasciatus	Covina	50	GRVD	8/31/2021	WNV
Los Angeles	SGVA1221	854	Cx. quinquefasciatus	Covina	32	GRVD	8/31/2021	WNV
Los Angeles	SGVA15	885	Cx. quinquefasciatus	Glendora	50	GRVD	9/1/2021	WNV
Los Angeles	SGVA286	862	Cx. quinquefasciatus	Baldwin Park	50	GRVD	8/31/2021	WNV
Los Angeles	SGVA445	869	Cx. quinquefasciatus	Rosemead	50	GRVD	8/31/2021	WNV
Los Angeles	SGVA458	884	Cx. quinquefasciatus	Covina	50	GRVD	9/1/2021	WNV

California Arbovirus Surveillance Bulletin #19

Week 35 Friday, September 3, 2021

Los Angeles	SGVA466	879	Cx. quinquefasciatus	Pasadena	32	GRVD	8/31/2021	WNV
Los Angeles	SGVA475	872	Cx. quinquefasciatus	Temple City	50	GRVD	8/31/2021	WNV
Los Angeles	SGVA477	856	Cx. quinquefasciatus	West Covina	49	GRVD	8/31/2021	WNV
Los Angeles	SGVA64	861	Cx. quinquefasciatus	West Covina	50	GRVD	8/31/2021	WNV
Los Angeles	SGVA8	859	Cx. quinquefasciatus	Pomona	50	GRVD	8/31/2021	WNV
Los Angeles	SGVA952	886	Cx. quinquefasciatus	San Dimas	50	GRVD	9/1/2021	WNV
Los Angeles	SGVA953	882	Cx. quinquefasciatus	Covina	50	GRVD	9/1/2021	WNV
Los Angeles	SGVA996	870	Cx. quinquefasciatus	South Pasadena	50	GRVD	8/31/2021	WNV
Madera	MADR12	370	Cx. tarsalis	Madera	50	CO2	8/24/2021	WNV
Madera	MADR192	373	Cx. tarsalis	Madera	14	CO2	8/24/2021	WNV
Madera	MADR204	372	Cx. tarsalis	Madera	10	CO2	8/24/2021	WNV
Madera	MADR309	396	Cx. tarsalis	Madera	11	CO2	8/27/2021	WNV
Madera	MADR688	395	Cx. tarsalis	Madera	18	CO2	8/27/2021	WNV
Orange	ORCO1005	3375	Cx. quinquefasciatus	Buena Park	2	BGSENT	8/31/2021	WNV
Orange	ORCO1006	3431	Cx. quinquefasciatus	Cypress	29	GRVD	8/31/2021	WNV
Orange	ORCO1008	3466	Cx. quinquefasciatus	Fullerton	27	GRVD	8/31/2021	WNV
Orange	ORCO1008	3472	Cx. quinquefasciatus	Fullerton	29	GRVD	8/31/2021	WNV
Orange	ORCO218	3380	Cx. quinquefasciatus	Anaheim	13	GRVD	8/31/2021	WNV
Orange	ORCO218	3502	Cx. quinquefasciatus	Anaheim	39	GRVD	8/31/2021	WNV
Orange	ORCO302	3440	Cx. quinquefasciatus	Anaheim	34	GRVD	8/31/2021	WNV
Placer	PLCR1113	1525	Cx. tarsalis	Pleasant Grove	31	CO2	8/31/2021	WNV
Placer	PLCR1114	1513	Cx. tarsalis	Lincoln	50	CO2	8/31/2021	WNV
Placer	PLCR30	1554	Cx. stigmatosoma	Lincoln	6	CO2	8/31/2021	WNV
Placer	PLCR81	1527	Cx. pipiens	Roseville	4	CO2	8/31/2021	WNV
Riverside	COAV130	3565	Cx. tarsalis	Oasis	50	CO2	8/31/2021	WNV
Riverside	COAV131	3569	Cx. tarsalis	Oasis	50	CO2	8/31/2021	WNV
Riverside	COAV5	3578	Cx. tarsalis	Oasis	38	CO2	8/31/2021	WNV
Riverside	COAV540	3566	Cx. tarsalis	Mecca	50	CO2	8/31/2021	WNV
Riverside	COAV540	3567	Cx. tarsalis	Mecca	20	CO2	8/31/2021	WNV
Riverside	COAV610	3573	Cx. tarsalis	Oasis	50	CO2	8/31/2021	WNV
Riverside	RIVR88	97	Cx. tarsalis	Nuevo	45	CO2	8/25/2021	WNV
Sacramento	SAYO201006	4733	Cx. tarsalis	Sacramento	50	CO2	8/31/2021	WNV
Sacramento	SAYO203032	4556	Cx. tarsalis	Sacramento	10	CO2	8/27/2021	WNV
Sacramento	SAYO203033	4562	Cx. pipiens	North Highlands	2	GRVD	8/27/2021	WNV
Sacramento	SAYO214001	4633	Cx. tarsalis	Carmichael	4	CO2	8/27/2021	WNV
Sacramento	SAYO214013	4628	Cx. tarsalis	Carmichael	2	GRVD	8/27/2021	WNV
Sacramento	SAYO232031	4700	Cx. tarsalis	Elk Grove	7	CO2	8/31/2021	WNV
Sacramento	SAYO233001	4735	Cx. pipiens	Elk Grove	14	GRVD	8/31/2021	WNV
Sacramento	SAYO233015	4587	Cx. pipiens	Sacramento	11	CO2	8/27/2021	WNV
Sacramento	SAYO233015	4589	Cx. pipiens	Sacramento	25	GRVD	8/27/2021	WNV
Sacramento	SAYO242013	4647	Cx. tarsalis	Hood	50	CO2	8/27/2021	WNV
Sacramento	SAYO245026	4455	Cx. pipiens	Wilton	48	CO2	8/27/2021	WNV
Sacramento	SAYO254019	4519	Cx. pipiens	Galt	50	CO2	8/27/2021	WNV
Sacramento	SAYO254021	4447	Cx. pipiens	Galt	14	GRVD	8/27/2021	WNV
Sacramento	SAYO254029	4604	Cx. tarsalis	Galt	18	CO2	8/27/2021	WNV
San Joaquin	SJCM8010	1709	Cx. pipiens	Ripon	50	CO2	8/31/2021	WNV
San Joaquin	SJCM8022	1774	Cx. tarsalis	Holt	50	CO2	8/31/2021	WNV
San Joaquin	SJCM8041	1729	Cx. pipiens	Lodi	21	CO2	8/31/2021	WNV
San Joaquin	SJCM8083	1827	Cx. pipiens	Escalon	22	CO2	9/2/2021	WNV
San Joaquin	SJCM8097	1719	Cx. tarsalis	Banta	38	CO2	8/31/2021	WNV
San Joaquin	SJCM8160	1749	Cx. tarsalis	Lodi	25	CO2	8/31/2021	WNV
San Joaquin	SJCM8199	1786	Cx. tarsalis	Manteca	50	CO2	8/31/2021	WNV
San Joaquin	SJCM8199	1787	Cx. tarsalis	Manteca	50	CO2	8/31/2021	WNV
San Joaquin	SJCM8199	1788	Cx. tarsalis	Manteca	50	CO2	8/31/2021	WNV

California Arbovirus Surveillance Bulletin #19

Week 35 Friday, September 3, 2021

San Joaquin	SJCM8199	1790	Cx. tarsalis	Manteca	50	CO2	8/31/2021	WNV
San Joaquin	SJCM8199	1791	Cx. tarsalis	Manteca	37	CO2	8/31/2021	WNV
San Joaquin	SJCM8199	1792	Cx. pipiens	Manteca	50	CO2	8/31/2021	WNV
San Joaquin	SJCM8199	1793	Cx. pipiens	Manteca	50	CO2	8/31/2021	WNV
San Joaquin	SJCM8199	1794	Cx. pipiens	Manteca	50	CO2	8/31/2021	WNV
San Joaquin	SJCM8199	1795	Cx. pipiens	Manteca	32	CO2	8/31/2021	WNV
San Joaquin	SJCM8205	1817	Cx. tarsalis	Farmington	5	CO2	9/2/2021	WNV
San Joaquin	SJCM8205	1818	Cx. pipiens	Farmington	10	CO2	9/2/2021	WNV
San Joaquin	SJCM8206	1765	Cx. pipiens	Lodi	50	CO2	8/31/2021	WNV
San Joaquin	SJCM8208	1810	Cx. tarsalis	Lodi	50	CO2	9/2/2021	WNV
San Joaquin	SJCM8208	1811	Cx. tarsalis	Lodi	6	CO2	9/2/2021	WNV
San Joaquin	SJCM8209	1812	Cx. tarsalis	Lodi	35	CO2	9/2/2021	WNV
San Joaquin	SJCM8209	1813	Cx. pipiens	Lodi	50	CO2	9/2/2021	WNV
San Joaquin	SJCM8219	1806	Cx. tarsalis	Stockton	50	CO2	8/31/2021	WNV
San Joaquin	SJCM8219	1807	Cx. tarsalis	Stockton	19	CO2	8/31/2021	WNV
San Joaquin	SJCM8219	1808	Cx. pipiens	Stockton	25	CO2	8/31/2021	WNV
San Joaquin	SJCM8224	1815	Cx. tarsalis	Lodi	50	CO2	9/2/2021	WNV
San Joaquin	SJCM8228	1823	Cx. tarsalis	Escalon	40	CO2	9/2/2021	WNV
San Joaquin	SJCM8228	1824	Cx. pipiens	Escalon	14	CO2	9/2/2021	WNV
San Joaquin	SJCM8233	1747	Cx. pipiens	Stockton	50	CO2	8/31/2021	WNV
Shasta	SHAS20040	540	Cx. tarsalis	Redding	37	CO2	9/1/2021	WNV
Shasta	SHAS242	549	Cx. tarsalis	Cottonwood	12	CO2	9/1/2021	WNV
Shasta	SHAS323	536	Cx. tarsalis	Redding	27	CO2	8/31/2021	WNV
Solano	SOLA35	249	Cx. tarsalis	Davis	50	CO2	8/26/2021	WNV
Solano	SOLA35	251	Cx. tarsalis	Davis	50	CO2	8/26/2021	WNV
Solano	SOLA38	239	Cx. tarsalis	Dixon	50	CO2	8/26/2021	WNV
Solano	SOLA8871	247	Cx. tarsalis	Dixon	36	CO2	8/26/2021	WNV
Stanislaus	EAST1025	21260	Cx. pipiens	Modesto	29	CO2	8/25/2021	WNV
Stanislaus	EAST1077	21265	Cx. pipiens	Modesto	41	GRVD	8/25/2021	WNV
Stanislaus	EAST1093	21274	Cx. pipiens	Oakdale	29	CO2	8/26/2021	WNV
Stanislaus	EAST1093	21276	Cx. pipiens	Oakdale	50	GRVD	8/26/2021	WNV
Stanislaus	EAST2014	21258	Cx. pipiens	Modesto	50	GRVD	8/24/2021	WNV
Stanislaus	EAST2016	21273	Cx. tarsalis	Oakdale	10	CO2	8/26/2021	WNV
Stanislaus	EAST2016	21275	Cx. pipiens	Oakdale	45	GRVD	8/26/2021	WNV
Stanislaus	EAST2019	21259	Cx. pipiens	Riverbank	22	GRVD	8/24/2021	WNV
Stanislaus	EAST2021	21267	Cx. tarsalis	Modesto	11	GRVD	8/25/2021	WNV
Stanislaus	EAST2021	21268	Cx. pipiens	Modesto	50	GRVD	8/25/2021	WNV
Stanislaus	EAST2022	21264	Cx. pipiens	Modesto	35	CO2	8/25/2021	WNV
Stanislaus	EAST2022	21270	Cx. pipiens	Modesto	20	GRVD	8/25/2021	WNV
Stanislaus	EAST2023	21262	Cx. pipiens	Modesto	26	CO2	8/25/2021	WNV
Stanislaus	EAST2023	21266	Cx. pipiens	Modesto	18	GRVD	8/25/2021	WNV
Stanislaus	TRLK1214	797	Cx. pipiens	Turlock	50	CO2	8/31/2021	WNV
Stanislaus	TRLK1219	829	Cx. pipiens	Modesto	31	CO2	8/31/2021	WNV
Stanislaus	TRLK1308	804	Cx. pipiens	Turlock	50	CO2	8/31/2021	WNV
Stanislaus	TRLK1310	789	Cx. pipiens	Hughson	41	CO2	8/31/2021	WNV
Stanislaus	TRLK1312	792	Cx. pipiens	Ceres	20	CO2	8/31/2021	WNV
Stanislaus	TRLK17131	794	Cx. pipiens	Turlock	5	CO2	8/31/2021	WNV
Stanislaus	TRLK1904	795	Cx. pipiens	Turlock	32	CO2	8/31/2021	WNV
Stanislaus	TRLK1905	822	Cx. pipiens	Denair	50	CO2	8/31/2021	WNV
Stanislaus	TRLK1906	821	Cx. pipiens	Hughson	50	CO2	8/31/2021	WNV
Stanislaus	TRLK432	802	Cx. pipiens	Turlock	50	CO2	8/31/2021	WNV
Stanislaus	TRLK432	803	Cx. pipiens	Turlock	50	CO2	8/31/2021	WNV
Stanislaus	TRLK526	806	Cx. pipiens	Denair	50	CO2	8/31/2021	WNV
Stanislaus	TRLK526	807	Cx. pipiens	Denair	48	CO2	8/31/2021	WNV

California Arbovirus Surveillance Bulletin #19

Week 35 Friday, September 3, 2021

Sutter	SUYA63	367	Cx. tarsalis	Live Oak	9	REST	8/30/2021	WNV
Tulare	DLTA5	1607	Cx. quinquefasciatus	Dinuba	21	CO2	8/31/2021	WNV
Tulare	DLTA6	1612	Cx. quinquefasciatus	Dinuba	50	CO2	8/31/2021	WNV
Tulare	DLTA6	1614	Cx. stigmatosoma	Dinuba	34	CO2	8/31/2021	WNV
Tulare	DLTA640412	1619	Cx. quinquefasciatus	Dinuba	50	CO2	8/31/2021	WNV
Tulare	DLTA640412	1623	Cx. stigmatosoma	Dinuba	21	CO2	8/31/2021	WNV
Tulare	DLTA6407	1556	Cx. quinquefasciatus	Dinuba	50	BGSENT	8/25/2021	WNV
Tulare	DLTA751732	1543	Cx. quinquefasciatus	Yetterem	50	CO2	8/25/2021	WNV
Tulare	DLTA752032	1537	Cx. quinquefasciatus	Patterson Tract	50	CO2	8/25/2021	WNV
Tulare	DLTA84221	1633	Cx. quinquefasciatus	Visalia	50	BGSENT	8/31/2021	WNV
Tulare	DLTA84221	1634	Cx. quinquefasciatus	Visalia	18	BGSENT	8/31/2021	WNV
Tulare	DLTA84341	1585	Cx. quinquefasciatus	Visalia	50	CO2	8/26/2021	WNV
Tulare	DLTA94031	1598	Cx. quinquefasciatus	Visalia	50	BGSENT	8/27/2021	WNV
Tulare	DLTA94031	1639	Cx. quinquefasciatus	Visalia	50	BGSENT	8/31/2021	WNV
Tulare	DLTA94031	1640	Cx. quinquefasciatus	Visalia	50	BGSENT	8/31/2021	WNV
Tulare	DLTA94031	1641	Cx. quinquefasciatus	Visalia	50	BGSENT	8/31/2021	WNV
Yolo	SAYO103007	4747	Cx. tarsalis	Dunnigan	50	CO2	8/31/2021	WNV
Yolo	SAYO114001	4724	Cx. tarsalis	Zamora	20	CO2	8/31/2021	WNV
Yolo	SAYO135019	4526	Cx. pipiens	Davis	14	CO2	8/27/2021	WNV
Yolo	SAYO135019	4531	Cx. tarsalis	Davis	50	CO2	8/27/2021	WNV
Yolo	SAYO136010	4573	Cx. tarsalis	Woodland	50	CO2	8/27/2021	WNV
Yolo	SAYO136010	4577	Cx. tarsalis	Woodland	11	GRVD	8/27/2021	WNV

Sentinel Chickens

County	Site Code	Nearest City	Date Bled	Virus	Band 01	Band 02
Tulare	TLRE0008	Tulare	8/20/2021	WNV	1752	1758

California Arbovirus Surveillance Bulletin #19

Week 35 Friday, September 3, 2021

TEST PROTOCOLS

Humans:

Specimens are tested by local laboratories with an IgM or IgG immunofluorescent assay (IFA) and/or an IgM enzyme immunoassay (EIA). Specimens with inconclusive results are forwarded to the California Department of Public Health Viral and Rickettsial Disease Laboratory (VRDL) for further testing with a plaque reduction neutralization test (PRNT).

Dead Birds

Oral swab samples collected from bird carcasses are tested at the UC Davis Arbovirus Research and Training laboratory (DART) or at a local agency for West Nile virus by RT-qPCR.

Sentinel Chickens:

Dried blood spot samples from sentinel chickens are tested at the California Department of Public Health Vector-Borne Disease Laboratory for IgG antibodies to West Nile, St. Louis encephalitis, and western equine encephalomyelitis viruses by an EIA. Positive samples are confirmed by IFA, western-blot, or PRNT.

Mosquito Pools:

Mosquito pools are tested at DART or at a local agency for West Nile, western equine encephalomyelitis, and St. Louis encephalitis viral RNA using a multiplex RT-qPCR. Invasive *Aedes* mosquitoes (*Ae. aegypti* and *Ae. albopictus*) are also tested at DART for chikungunya, dengue, and Zika viral RNA by a separate RT-qPCR.

Prepared by the Vector-Borne Disease Section (Infectious Diseases Branch), California Department of Public Health, 850 Marina Bay Parkway, Richmond, CA 94804. Questions concerning this bulletin should be addressed to Tina Feiszli: Tina.Feiszli@cdph.ca.gov.

8. Enterprise Fleet Management (EFM)

Prepared For: Delta Vector Control District
Debboun, Mustapha

Date 09/01/2021
AE/AM ANB/TSP

Unit #

Year 2022 **Make** Chevrolet **Model** Colorado
Series WT 4x2 Extended Cab 6 ft. box 128.3 in. WB

Vehicle Order Type Ordered **Term** 60 **State** CA **Customer#** 605532

\$ 23,850.39	Capitalized Price of Vehicle ¹
\$ 0.00 *	Sales Tax <u>0.0000%</u> State <u>CA</u>
\$ 0.00 *	Initial License Fee
\$ 0.00 *	Registration Fee
\$ 290.00	Other: (See Page 2)
\$ 0.00	Capitalized Price Reduction
\$ 0.00	Tax on Capitalized Price Reduction
\$ 0.00	Gain Applied From Prior Unit
\$ 0.00 *	Tax on Gain On Prior
\$ 0.00 *	Security Deposit
\$ 0.00 *	Tax on Incentive (Taxable Incentive Total : \$0.00)

All language and acknowledgments contained in the signed quote apply to all vehicles that are ordered under this signed quote.

Order Information

Driver Name	TBD
Exterior Color	Summit White
Interior Color	Jet Black/Dark Ash w/Vinyl Seat Trim
Lic. Plate Type	Exempt
GVWR	0

\$ 24,140.39	Total Capitalized Amount (Delivered Price)
\$ 325.90	Depreciation Reserve @ <u>1.3500%</u>
\$ 76.65	Monthly Lease Charge (Based on Interest Rate - Subject to a Floor) ²
\$ 402.55	Total Monthly Rental Excluding Additional Services

Additional Fleet Management

Master Policy Enrollment Fees
Commercial Automobile Liability Enrollment
Liability Limit \$0.00

\$ 0.00	Physical Damage Management	Comp/Coll Deductible	<u>0 / 0</u>
\$ 0.00	Full Maintenance Program ³ Contract Miles <u>0</u>	OverMileage Charge	<u>\$ 0.00</u> Per Mile
	Incl: # Brake Sets (1 set = 1 Axle) <u>0</u>	# Tires <u>0</u>	Loaner Vehicle Not Included

\$ 0.00 Additional Services SubTotal

\$ 34.22 Sales Tax 8.5000% **State** CA

\$ 436.77 Total Monthly Rental Including Additional Services

\$ 4,586.39	Reduced Book Value at <u>60</u> Months
\$ 400.00	Service Charge Due at Lease Termination

Quote based on estimated annual mileage of 10,000
(Current market and vehicle conditions may also affect value of vehicle)
(Quote is Subject to Customer's Credit Approval)

Notes

Enterprise FM Trust will be the owner of the vehicle covered by this Quote. Enterprise FM Trust (not Enterprise Fleet Management) will be the Lessor of such vehicle under the Master Open - End (Equity) Lease Agreement and shall have all rights and obligations of the Lessor under the Master Open - End (Equity) Lease Agreement with respect to such vehicle. Lessee must maintain insurance coverage on the vehicle as set forth in Section 11 of the Master Open-End (Equity) Lease Agreement until the vehicle is sold.

ALL TAX AND LICENSE FEES TO BE BILLED TO LESSEE AS THEY OCCUR.

Lessee hereby authorizes this vehicle order, agrees to lease the vehicle on the terms set forth herein and in the Master Equity Lease Agreement and agrees that Lessor shall have the right to collect damages in the event Lessee fails or refuses to accept delivery of the ordered vehicle. Lessee certifies that it intends that more than 50% of the use of the vehicle is to be in a trade or business of the Lessee.

LESSEE Delta Vector Control District
BY

TITLE

DATE

* INDICATES ITEMS TO BE BILLED ON DELIVERY.

¹ Capitalized Price of Vehicle May be Adjusted to Reflect Final Manufacturer's Invoice. Lessee Hereby Assigns to Lessor any Manufacturer Rebates And/Or Manufacturer Incentives Intended for the Lessee, Which Rebates And/Or Incentives Have Been Used By Lessor to Reduce the Capitalized Price of the Vehicle.

² Monthly Lease Charge Will Be Adjusted to Reflect the Interest Rate on the Delivery Date (Subject to a Floor).

³ The inclusion herein of references to maintenance fees/services are solely for the administrative convenience of Lessee. Notwithstanding the inclusion of such references in this [Invoice/Schedule/Quote], all such maintenance services are to be performed by Enterprise Fleet Management, Inc., and all such maintenance fees are payable by Lessee solely for the account of Enterprise Fleet Management, Inc., pursuant to that certain separate [Maintenance Agreement] entered into by and between Lessee and Enterprise Fleet Management, Inc.; provided that such maintenance fees are being billed by Enterprise FM Trust, and are payable at the direction of Enterprise FM Trust, solely as an authorized agent for collection on behalf of Enterprise Fleet Management, Inc.

Other Totals

Description	(B)illed or (C)apped	Price
Initial Administration Fee	C	\$ 140.00
Pricing Plan Delivery Charge	B	\$ 175.00
Courtesy Delivery Fee	C	\$ 150.00
Total Other Charges Billed		\$ 175.00
Total Other Charges Capitalized		\$ 290.00
Other Charges Total		\$ 465.00

VEHICLE INFORMATION:

2022 Chevrolet Colorado WT 4x2 Extended Cab 6 ft. box 128.3 in. WB - US

Series ID: 12M53

Pricing Summary:

	INVOICE	MSRP
Base Vehicle	\$24,292.8	\$25,200.00
Total Options	\$2,362.59	\$2,596.25
Destination Charge	\$1,195.00	\$1,195.00
Total Price	\$27,850.39	\$28,991.25

SELECTED COLOR:

Exterior: GAZ-Summit White
 Interior: H2Q-Jet Black/Dark Ash w/Vinyl Seat Trim

SELECTED OPTIONS:

CODE	DESCRIPTION	INVOICE	MSRP
2WT	Preferred Equipment Group 2WT	NC	NC
5GD	Tow/Haul Mode	Included	Included
A91	Remote Locking Tailgate	Included	Included
AH6	Driver 4-Way Power Seat Adjuster	Included	Included
AR7	Front Bucket Seats	STD	STD
ATG	Extended Range Remote Keyless Entry	Included	Included
CH9	GVWR: 5,700 lbs (2,585 kgs)	NC	NC
CTT	Hitch Guidance	Included	Included
G80	Automatic Locking Rear Differential	\$295.75	\$325.00
GAZ_01	Summit White	NC	NC
GU6	3.42 Rear Axle Ratio	NC	NC
H2Q_01	Jet Black/Dark Ash w/Vinyl Seat Trim	NC	NC
IOR	Radio: Chevrolet Infotainment 3 System	STD	STD
K34	Electronic Automatic Cruise Control	Included	Included
LGZ	Engine: 3.6L DI DOHC V6 VVT	\$1,351.35	\$1,485.00
M5T	Transmission: 8-Speed Automatic	Included	Included
PAINT	Monotone Paint Application	STD	STD
PCN	WT Convenience Package	\$482.30	\$530.00
PPA	EZ-Lift & Lower Tailgate	Included	Included
QHR	Tires: 255/65R17 AS BW	STD	STD
R9Y	Fleet Free Maintenance Credit	-\$30.71	-\$33.75
RAP	Wheels: 17" x 8" Ultra Silver Metallic Steel	STD	STD
RM7	17" x 8" Steel Spare Wheel	Included	Included
STDTM	Vinyl Seat Trim	STD	STD
U2K	SiriusXM Radio	Included	Included
UQ3	6-Speaker Audio System Feature	Included	Included
UTJ	Unauthorized Entry Theft-Deterrent System	Included	Included
VK3	Front License Plate Kit	\$36.40	\$40.00
WARANT	Fleet Customer Powertrain Limited Warranty	NC	NC
YF5	California State Emissions Requirements	NC	NC
Z82	Heavy-Duty Trailering Package	\$227.50	\$250.00
ZAO	255/65R17 AS BW Spare Tire	Included	Included

CONFIGURED FEATURES:

Body Exterior Features:

Number Of Doors: 4
Rear Driver Door: reverse opening rear passenger doors
Rear Cargo Door Type: tailgate
Driver And Passenger Mirror: manual folding side-view door mirrors
Door Handles: black
Front And Rear Bumpers: body-coloured front and rear bumpers with black rub strip
Rear Step Bumper: rear step bumper
Front License Plate Bracket: front license plate bracket
Box Style: regular
Body Material: galvanized steel/aluminum body material
: class IV trailering with harness, hitch
Grille: chrome grille

Convenience Features:

Air Conditioning: manual air conditioning
Cruise Control: cruise control with steering wheel controls
Power Windows: power windows with driver 1-touch down
Remote Keyless Entry: keyfob (front doors) remote keyless entry
Illuminated Entry: illuminated entry
Auto Locking: auto-locking doors
Steering Wheel: steering wheel with manual tilting
Day-Night Rearview Mirror: day-night rearview mirror
Front Cupholder: front and rear cupholders
Floor Console: full floor console with covered box
Glove Box: glove box
Driver Door Bin: driver and passenger door bins
Rear Door Bins: rear door bins
Dashboard Storage: dashboard storage
IP Storage: bin instrument-panel storage
Rear Underseat Storage Tray: rear underseat storage tray
Driver Footrest: driver's footrest
Retained Accessory Power: retained accessory power
Power Accessory Outlet: 2 12V DC power outlets

Entertainment Features:

radio: SiriusXM AM/FM/Satellite with seek-scan
Radio Data System: radio data system
Speakers: 6 speakers
1st Row LCD: 1 1st row LCD monitor
Wireless Connectivity: wireless phone connectivity
Antenna: integrated roof antenna

Lighting, Visibility and Instrumentation Features:

Headlamp Type: delay-off aero-composite halogen headlamps
Cab Clearance Lights: cargo bed light
Front Wipers: variable intermittent wipers
Front Windshield Visor Strip: front windshield visor strip
Tinted Windows: light-tinted windows
Dome Light: dome light with fade
Variable IP Lighting: variable instrument panel lighting
Display Type: analog appearance
Tachometer: tachometer
Low Tire Pressure Warning: tire specific low-tire-pressure warning
Trip Computer: trip computer
Trip Odometer: trip odometer
Water Temp Gauge: water temp. gauge
Clock: in-radio display clock
Systems Monitor: systems monitor

Rear Vision Camera: rear vision camera
Oil Pressure Warning: oil-pressure warning
Water Temp Warning: water-temp. warning
Battery Warning: battery warning
Low Coolant Warning: low-coolant warning
Lights On Warning: lights-on warning
Key in Ignition Warning: key-in-ignition warning
Low Fuel Warning: low-fuel warning
Low Washer Fluid Warning: low-washer-fluid warning
Door Ajar Warning: door-ajar warning
Brake Fluid Warning: brake-fluid warning
Turn Signal On Warning: turn-signal-on warning
Transmission Fluid Temperature Warning: transmission-fluid-temperature warning

Safety And Security:

ABS four-wheel ABS brakes
Number of ABS Channels: 4 ABS channels
Brake Type: four-wheel disc brakes
Vented Disc Brakes: front ventilated disc brakes
Daytime Running Lights: daytime running lights
Spare Tire Type: full-size spare tire
Spare Tire Mount: underbody mounted spare tire w/crankdown
Driver Front Impact Airbag: driver and passenger front-impact airbags
Driver Side Airbag: seat-mounted driver and passenger side-impact airbags
Overhead Airbag: curtain 1st and 2nd row overhead airbag
Occupancy Sensor: front passenger airbag occupancy sensor
Height Adjustable Seatbelts: height adjustable front seatbelts
Seatbelt Pretensioners: front seatbelt pre-tensioners
Side Impact Bars: side-impact bars
Tailgate/Rear Door Lock Type: tailgate/rear door lock included with power door locks
Ignition Disable: immobilizer
Security System: security system
Panic Alarm: panic alarm
Electronic Stability: StabiliTrak w/Proactive Roll Avoidance electronic stability stability control with anti-roll
Traction Control: ABS and driveline traction control
Front and Rear Headrests: manual adjustable front head restraints
Rear Headrest Control: 2 rear head restraints

Seats And Trim:

Seating Capacity max. seating capacity of 4
Front Bucket Seats: front bucket seats
Number of Driver Seat Adjustments: 6-way driver and passenger seat adjustments
Reclining Driver Seat: manual reclining driver and passenger seats
Driver Height Adjustment: power height-adjustable driver and passenger seats
Driver Fore/Aft: power driver and passenger fore/aft adjustment
Front Centre Armrest Storage: front centre armrest
Rear Seat Type: rear jump seat
Rear Folding Position: rear seat fold-up cushion
Leather Upholstery: vinyl front and rear seat upholstery
Headliner Material: full cloth headliner
Floor Covering: full carpet floor covering
Cabback Insulator: cabback insulator
Shift Knob Trim: urethane shift knob
Floor Mats: carpet front and rear floor mats

Standard Engine:

Engine 308-hp, 3.6-liter V-6 (regular gas)

Standard Transmission:

Transmission 8-speed automatic w/ OD and auto-manual

9. Vehicle Replacement

The General Manager will request approval to purchase a vehicle to replace truck T2. Insurance will reimburse the total amount less \$1,000.00 deductible.



Retail Worksheet

Make Primary Send To F&I

Deal

Deal #

Deal Date

Deal Type

Financial Inst.

Program

Deal Status

Vehicle

New Used Demo Cert.

Stock #

Year

Make CHEVROLET TRUC

Model

Style

Odometer

Buyer

Customer #

Last

First

Company

Reg State

County

Sales Price

MSRP	32,955.00
Discount	0.00
Selling Price	32,955.00
Aftermarkets	199.00
Doc Fee	85.00
VSI Premium	0.00
ESC Premium	0.00
Maintenance	0.00
GAP Premium	0.00
LAH/TUI	0.00
Prior Lease Bal	0.00
License Fee	540.00
Dealer Fees	0.00
Total Fees	578.75
Total Taxes	2,908.41
Total Price	36,726.16
Trade Difference	33,154.00

Down Payment

Cash Down	0.00
Deposit	0.00
Total Rebates	500.00
Total Trade Allow	0.00
Total Trade Payoff	0.00
Total Net Trade	0.00
Total Def Down	0.00
Total Down Payment	500.00

Payment

Term

Sell Rate

AOR

Days 1st Payment

Payments Per Year

1st Payment Date

Prepaid Fin Charge

APR

Amount Financed

Finance Charge

Total of Payments

Total Sales Price

Payment 36,226.16

4

VIN# 1GCCGSCEN1M1223243

10. Non-Elective Component

CalPERS

Retirees

	Min Employer Contribution		RATE	AB 2544		
	Set By		HAS BEEN	# years * 5% * Minimum contribution	formula used	
before 2004	Legislature	\$16.00	\$1.00			
2004	Annually	\$32.20	2.61	0.05		
2005		\$48.40	5.03	0.10		
2006		\$64.60	8.26	0.15		
2007		\$80.80	12.30	0.20	16.16	
2008		\$97.00	17.15	0.25	\$24.25	
2009	CalPers	\$101.00	CPI%	22.20	0.30	\$30.30
2010	PEMHCA	\$105.00	0.034	27.45	0.35	\$36.75
2011	CPI-Med	\$108.00	0.030	32.85	0.40	\$43.20
2012	component	\$112.00	0.037	38.45	0.45	\$50.40
2013		\$115.00	0.025	44.20	0.50	\$57.50
2014		\$119.00	0.024	50.15	0.55	\$65.45
2015		\$122.00	0.026	56.25	0.60	\$73.20
2016		\$125.00	0.038	62.50	0.65	\$81.25
2017		\$128.00	0.025	68.90	0.70	\$89.60
2018		\$133.00	0.025	75.55	0.75	\$99.75
2019		\$136.00	0.025	82.35	0.80	\$108.80
2020		\$139.00	0.025	89.30	0.85	\$118.15
2021		\$143.00	0.025	96.45	0.90	\$128.70
2022		\$149.00	0.025	103.90	0.95	\$141.55
2023	not set	\$152.73	0.025	111.54	1.00	\$152.73

this was our
old rate
prior to AB2544

--projected--

11. Reappointments

The General Manager will poll Trustees up for reappointment as to whether they want a letter sent on their behalf to the appointing authority.

12. Closed Session

Section 54956.9 of Division 3.6 of Title 1 of the Government Code.

13. Adjournment

Adjourn the meeting of the Board of Trustees to reconvene on Wednesday, October 13, 2021 at 4:30 p.m. in the Delta Vector Control District Boardroom, 1737 W. Houston Ave., Visalia, CA.